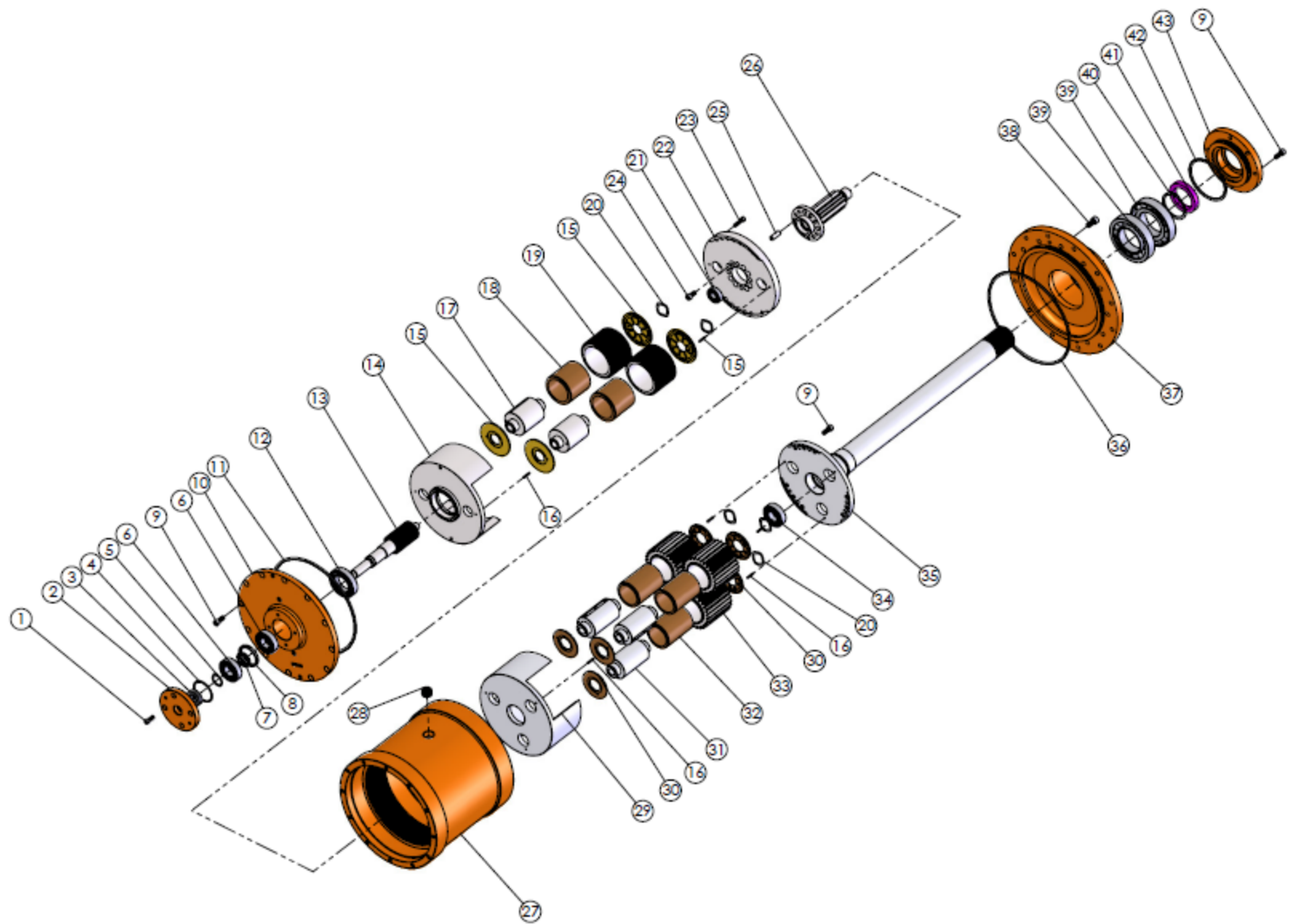
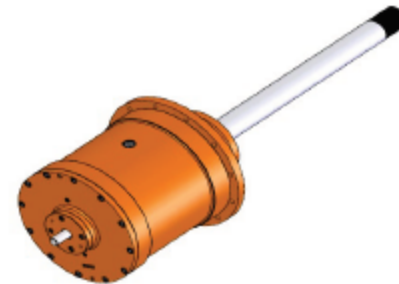


# Rev Tech LC - Aftermarket Parts for GB-53 Gearbox



Item #	Part #	Description	Qty	Item #	Part #	Description	Qty
1	280100	SCHS 1-4-20 x 3/4"	4	25	282300	Dowel Pins 3/8 x 1"	4
2	280200	Seal Retainer	1	26	282400	2nd Stage Pinion	1
3	280400	Oil Seal	1	26-A	280003	1st Stage Assembly 53:1	1
4	280300	O'Ring 134-70	1	26-B	280004	1st Stage Assembly 100:1	1
5	280501	Snap Ring	1	27	282600	Ring Gear Case	1
6	280500	Bearing 6205	2	28	282601	Oil Plug	1
7	280600	Inner Pinion Spacer	1	29	282700	2nd Stage Outer Plate	1
8	280601	Outer Pinion Spacer	1	30	113100	2nd Stage Thrust Washer	6
9	280900	SHCS 5/16-18 x 3/4"	12	31	282900	2nd Stage Axle	3
10	280700	Outside Cover	1	32	283000	2nd Stage Bronze Bearing	3
11	280800	O'Ring 373 H70	1	33	283100	2nd Stage Planet Gear	3
12	281000	Bearing 6008	1	20	112000	Spring Washer	3
13	281800	1st Stage Pinion 53:1	1	34	280500	Bearing 6205	1
13-A	281802	1st Stage Pinion 100:1	1	35	283400	2nd Stage Inner Plate w/Spline	1
14	281200	1st Stage Outer Plate	1	35-A	283500	2nd Stage Assembly	1
15	281300	1st Stage Thrust Washer	4	9	280900	SHCS 5/16-18 x 3/4"	9
16	281100	Roll Pin 1/8" x 3/4"	10	36	280801	O'Ring 372 H70	1
17	281600	1st Stage Axle	2	37	283600	Inside Cover	1
18	281500	1st Stage Bronze Bearing	2	38	283800	SHCS 3/8"-16 x 3/4"	12
19	281400	1st Stage Planet Gear 53:1	2	39	283700	Bearing 7212	2
19-A	281401	1st Stage Planet Gear 100:1	2	40	283900	Spiral Lock RR 243	1
20	112000	Spring Washer	2	41	284010	Oil Seal	1
21	282100	Bearing 6202	1	42	284100	O'Ring 344	1
22	282200	1st Stage Inner Plate	1	43	283701	Spline Seal Cap	1
23	281700	SCHS 1-4-20 x 3/4"	8	9	284300	SHCS 5/16" -18 x 3/4"	4
24	282300	SHCS 5/16-18 x 5/8"	8				



\* Rev Tech LC is an independent centrifuge gearbox part supplier for various OEM companies and is not affiliated with these OEM companies.