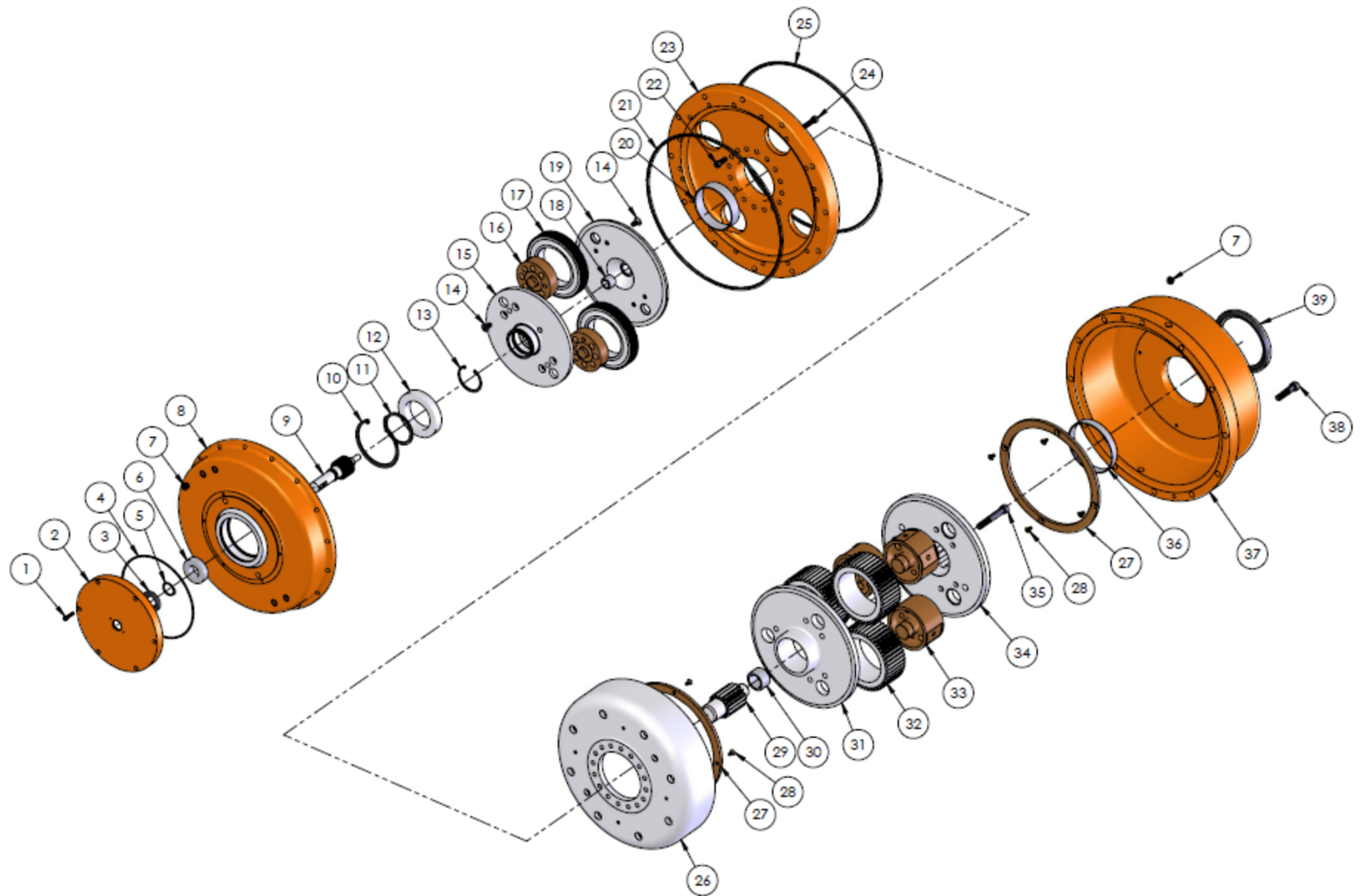


Rev Tech LC - Aftermarket Parts for SA-52 Gearbox



Item#	Part #	Description	Qty	Item#	Part #	Description	Qty
1	130100	SHCS 1/4" - 20 x 1"	6	18	221600	Needle Bearing J1412/IR1012	1
2	180100	Cover	1	19	221500	1st Stage Housing Pinion End	1
3	180200	Oil Seal	1	20	222000	DU Bearing Center Plate	1
4	130300	O'Ring 267 H70	1	21	132500	O'Ring 460 H70	1
5	180501	Snap Ring 5000 - 450	1	22	221902	SHCS 3/8" - 24 x 1"	16
6	180500	Bearing 6015	1	23	221900	Center Plate	1
7	130901	Oil Plug	4	24	221901	SHCS 3/8" - 16 x 1 1/2"	16
8-A	180304	1st Stage Ring Gear 75:1	1	25	222100	O'Ring 463 H70	1
8-B	180305	1st Stage Ring Gear 131:1	1	26	222200	2nd Stage Ring Gear	1
8-C	180306	1st Stage Ring Gear 38:1	1	27	220200	Thrust Washer	2
9-A	180900	1st Stage Pinion 75:1	1	28	222300	FH SHCS 1/4" - 20 x 1/2"	8
9-B	180901	1st Stage Pinion 131:1	1	29	221700	2nd Stage Pinion	1
9-C	180902	1st Stage Pinion 38:1	1	30	222800	Needle Bearing J2412/IR2016	1
10	180600	Snap Ring 5100-300	1	31	222400	2nd Stage Outer Plate	1
11	180800	Snap Ring 5000-244	1	32	222500	2nd Stage Planet Gear	3
12	180700	Bearing 6206	1	33	222600	2nd Stage Bronze Journal	3
13	181000	Snap Ring 5100-118	1	34	222700	2nd Stage Housing w/Spline	1
14	221001	FH SHCS 3/8" - 16 x 3/4"	16	35	222702	SHCS 1/2" - 13 x 4"	6
15	221000	1st Stage Housing Bearing End	1	36	223200	2nd Stage DU Bearing	1
16	181211	1st Stage Bronze Journal	2	37	223000	Case	1
17-A	131800	1st Stage Planet Gear 75:1	2	38	223001	SHCS 1/2" - 13 x 2 1/4"	12
17-B	131801	1st Stage Planet Gear 131:1	2	39	223100	Oil Seal	1
17-C	131802	1st Stage Planet Gear 38:1	2				

* Rev Tech LC is an independent centrifuge gearbox part supplier for various OEM companies and is not affiliated with these OEM companies.

