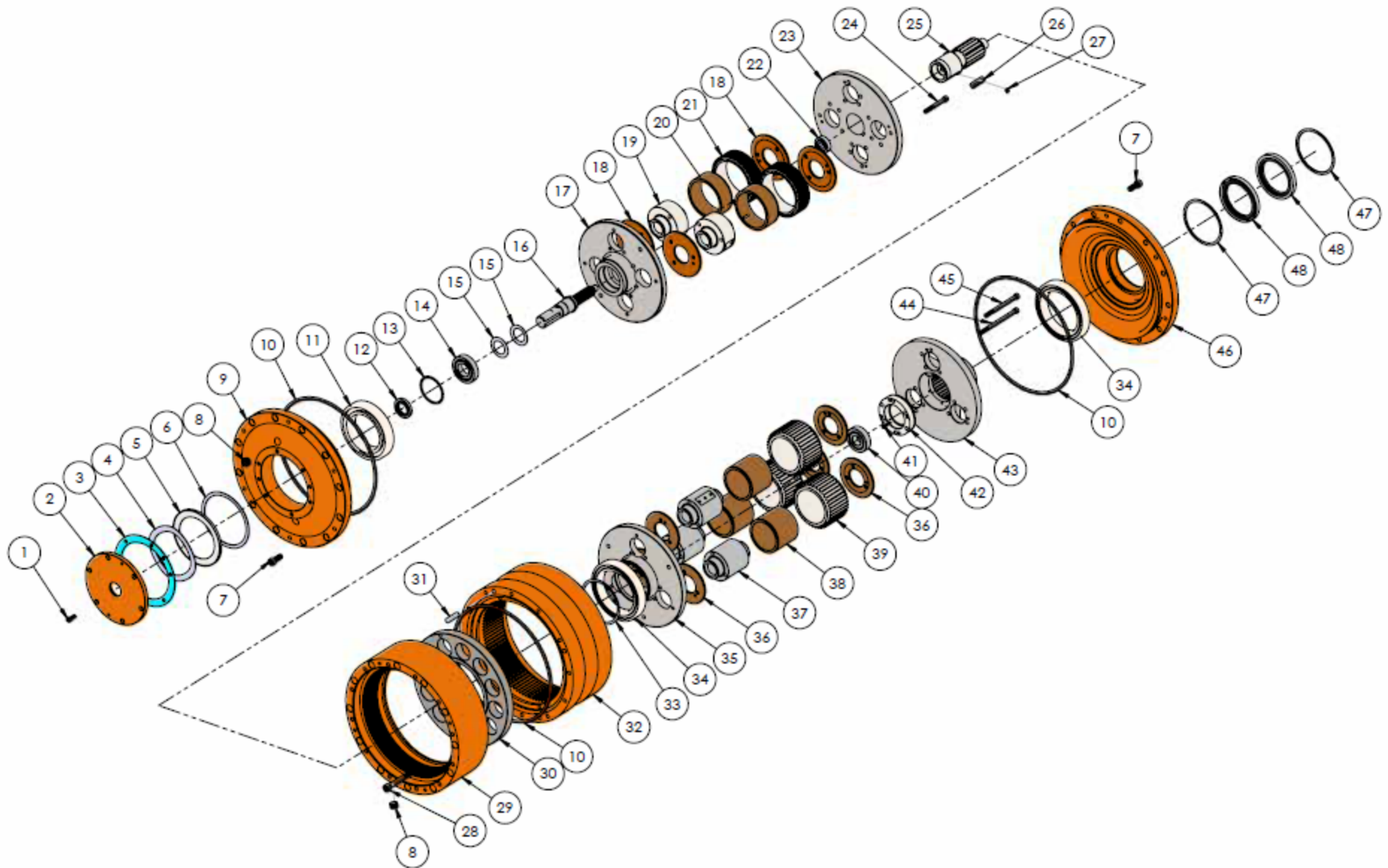


\* Rev Tech LC is an independent centrifuge gearbox part supplier for various OEM companies and is not affiliated with these OEM companies.



Item#	Part #	Description	Qty
1	320300	SHCS 5/16" -18 x 7/8"	6
2	320100	Seal Cap	1
3	320200	Gasket	1
4	150901	Wavy Spring Washer	1
5	320902	Wavy Spring Retainer	1
6	320903	Wavy Spring Spacer	1
7	320800	SHCS 1/2" - 13 x 1 1/4"	24
8	320500	Oil Plug	3
9	320700	Outside Cover	1
10	320800	O'Ring 456 H70	2
11	321000	Bearing 6022M	1
12	150400	Oil Seal	1
13	321200	Spiral Lock Retainer RR - 314	1
14	321100	Bearing 6208	1
15	151101	Disc Spring	2
16-A	322300	1st Stage Pinion P-98	1
16-B	322301	1st Stage Pinion P-49	1
17	321302	1st Stage Outer Plate	1
18-A	321402	1st Stage Thrust Washer P-98	4
18-B	322900	1st Stage Thrust Washer P-49	4
19-A	321500	1st Stage Axle P-98	2
19-B	321501	1st Stage Axle P-49	2
20-A	321700	1st Stage Bronze Bearing P-98	2
20-B	321701	1st Stage Bronze Bearing P-49	2
21-A	321800	1st Stage Planet Gear P-98	2
21-B	321801	1st Stage Planet Gear P-49	2
22	322400	Bearing 7303	1

Item#	Part #	Description	Qty
23	322106	1st Stage Inner Plate	1
24	322200	SHCS 1/2" - 13 x 3- 1/4"	25
25	322102	2nd Stage Pinion (Insertable)	1
26	322103	Key	1
27	322104	Set Screw	1
28	322201	SHCS 1/2" - 13 x 4"	15
29	322501	1st Stage Ring Gear Case	1
30	322503	Case Center Bearing Support	1
31	322504	Dowel Pin	1
32	322502	2nd Stage Ring Gear Case	1
32-A	322500	Ring Gear Case Assembly	1
33	152700	Spiral Lock Retainer RR-500	1
34	151000	Bearing 5" x 7"	2
35	322800	2nd Stage Outer Plate	1
36	322900	2nd Stage Thrust Washer	6
37	323000	2nd Stage Axle	3
38	323200	2nd Stage Bronze Bearing	3
39	323300	2nd Stage Planet Gear	3
40	323800	Bearing 7306	1
41	323502	SHCS 1/4-20 x 1"	6
42	323501	Spline Plug	1
43	323500	2nd Stage Cover w/Spline	1
44	322200	SHCS 1/2" - 13 x 5-3/4"	6
45	323100	SHCS 1/2" - 13 x 5"	3
46	323800	Inside Cover	1
47	324100	Spiral Lock Retainer RR-525	2
48	323900	Oil Seal	2

