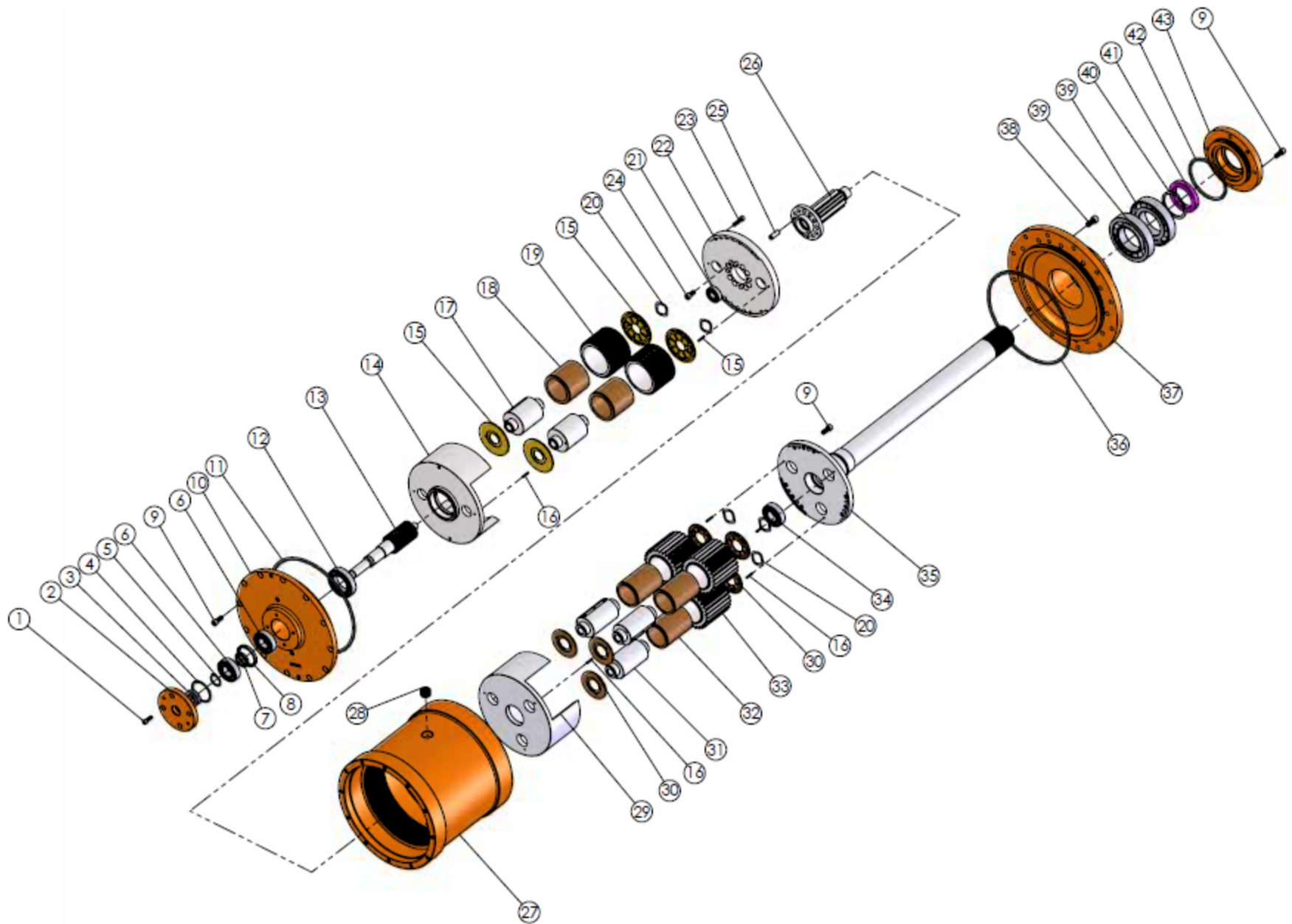


* Rev Tech LC is an independent centrifuge gearbox part supplier for various OEM companies and is not affiliated with these OEM companies.



Item #	Part #	Description	Qty	List	Whs	Mfg
1	280100	SCHS 1-1/4-20 x 3/4"	4	\$1	\$1	\$1
2	280200	Seal Retainer	1	\$275	\$235	\$195
3	280400	Oil Seal	1	\$30	\$24	\$18
4	280300	O'Ring 134-70	1	\$7	\$6	\$5
5	280501	Snap Ring	1	\$8	\$5	\$3
6	280500	Bearing 6205	2	\$44	\$34	\$26
7	280600	Inner Pinion Spacer	1	\$34	\$26	\$20
8	280601	Outer Pinion Spacer	1	\$50	\$40	\$30
9	280900	SHCS 5/16-18 x 3/4"	12	\$1	\$1	\$1
10	280700	Outside Cover	1	\$1,150	\$995	\$875
11	280800	O'Ring 373 H70	1	\$12	\$10	\$8
12	281000	Bearing 6008	1	\$53	\$43	\$33
13	281800	1st Stage Pinion 53:1	1	\$525	\$425	\$365
14	281200	1st Stage Outer Plate	1	\$1,495	\$1,340	\$1,125
15	281300	1st Stage Thrust Washer	4	\$110	\$85	\$65
16	281100	Roll Pin 1/8" x 9/16"	10	\$1	\$1	\$1
17	281600	1st Stage Axle	2	\$220	\$195	\$175
18	281500	1st Stage Bronze Bearing	2	\$80	\$65	\$50
19	281400	1st Stage Planet Gear 53:1	2	\$720	\$550	\$425
20	112000	Spring Washer	2	\$4	\$3	\$2
21	282100	Bearing 6202	1	\$36	\$29	\$22
22	282200	1st Stage Inner Plate	1	\$525	\$445	\$375
23	281700	SCHS 1-1/4-20 x 1"	8	\$1	\$1	\$1
24	282300	SHCS 5/16-18 x 5/8"	4	\$1	\$1	\$1

Item #	Part #	Description	Qty	List	Whs	Mfg
25	282300	Dowel Pins 3/8 x 1-1/8"	4	\$1	\$1	\$1
26	282400	2nd Stage Pinion	1	\$540	\$450	\$385
26-A	282500	1st Stage Assembly	1	\$5,600	\$4,700	\$3,950
27	282600	Ring Gear Case	1	\$3,400	\$3,000	\$2,525
28	282601	Oil Plug	1	\$3	\$2	\$2
29	282700	2nd Stage Outer Plate	1	\$1,650	\$1,425	\$1,275
30	113100	2nd Stage Thrust Washer	6	\$110	\$85	\$65
31	282900	2nd Stage Axle	3	\$250	\$210	\$175
32	283000	2nd Stage Bronze Bearing	3	\$80	\$65	\$50
33	283100	2nd Stage Planet Gear	3	\$720	\$550	\$425
20	112000	Spring Washer	3	\$4	\$3	\$2
34	280500	Bearing 6205	1	\$32	\$28	\$26
35	283400	2nd Stage Inner Plate w/Spline	1	\$2,650	\$2,460	\$2,200
35-A	283500	2nd Stage Assembly	1	\$7,750	\$6,475	\$5,400
9	280900	SHCS 5/16-18 x 3/4"	8	\$1	\$1	\$1
36	280801	O'Ring 372 H70	1	\$12	\$10	\$8
37	283600	Inside Cover	1	\$1,465	\$1,265	\$1,065
38	283800	SHCS 3/8"-16 x 3/4"	12	\$1	\$1	\$1
39	283700	Bearing 7212	2	\$305	\$265	\$225
40	283900	Spiral Lock RR 243	1	\$18	\$15	\$13
41	284010	Oil Seal	1	\$120	\$90	\$70
42	284100	O'Ring 344	1	\$7	\$6	\$5
43	283701	Spline Seal Cap	1	\$295	\$250	\$210
9	284300	SHCS 5/16" -18 x 3/4"	8	\$1	\$1	\$1

