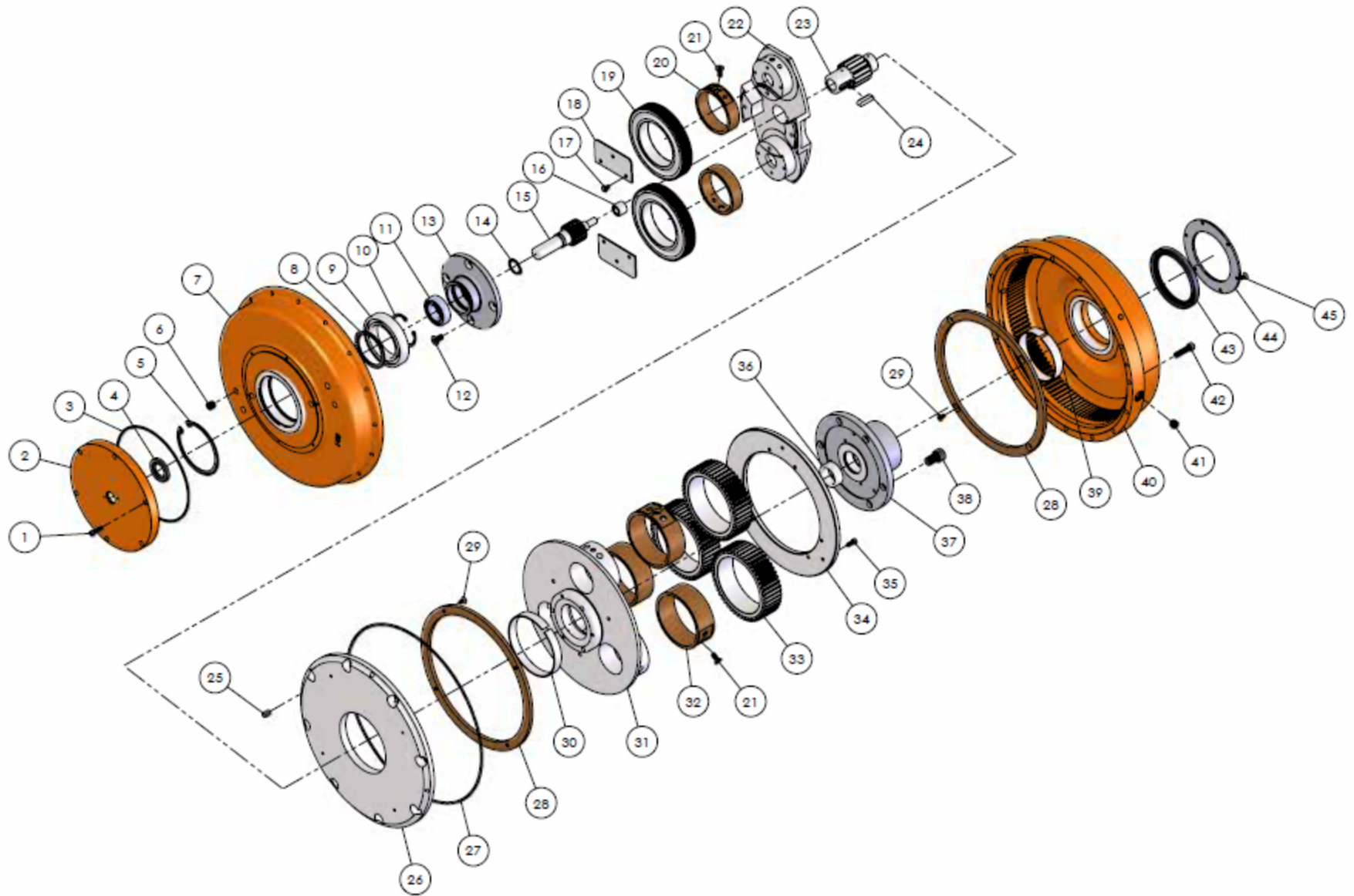


\* Rev Tech LC is an independent centrifuge gearbox part supplier for various OEM companies and is not affiliated with these OEM companies.



Item#	Part#	Description	Qty	Item#	Part#	Description	Qty
1	130100	SHCS 1/4" - 20 x 1"	6	23-A	132400	2nd Stage Pinion	1
2	180100	Cover	1	23-B	1818002	2nd Stage Pinion (OEM)	1
3	130300	O'Ring 267 H70	1	24	132300	Key	1
4	180200	Oil Seal	1	25	132601	Dowel Pin 3/8" x 5/8"	1
5	180501	Snap Ring 5000-450	1	28	182000	Center Plate	1
6	130901	Oil Plug	4	27	132500	O'Ring 460 H70	1
7-A	180304	1st Stage Ring Gear 80:1	1	28	182100	Bronze Thrust Washer	2
7-B	180305	1st Stage Ring Gear 140:1	1	29	182200	FH SHCS (Brass)1/4" - 20 x 1/2"	14
7-C	180306	1st Stage Ring Gear 40:1	1	30	182002	Center Plate DU Bearing	1
7-D	180303	Bearing Insert	1	31	182300	2nd Stage Cage	1
8	180600	Snap Ring 5100-300	1	32-A	132900	2nd Stage Bronze Gear Bearing	3
9	180500	Bearing 6015	1	32-B	182511	2nd Stage Bronze Journal (OEM)	3
10	180800	Snap Ring 5000-244	1	33	133100	2nd Stage Planet Gear	3
11	180700	Bearing 6206	1	34	183200	Gear Retainer/Thrust Plate	1
12	131000	FH SHCS 3/8" - 16 x 3/4"	4	35	183201	SHCS 1/4" - 28 x 5/8"	9
13	181201	Bearing Retainer	1	36-A	181701	Needle Bearing B2812/IR242816	1
14	181000	Snap Ring 5100-118	1	36-B	222800	Needle Bearing J2412/IR2016 (OEM)	1
15-A	180900	1st Stage Pinion 80:1	1	37-A	183500	Female Spline	1
15-B	180901	1st Stage Pinion 140:1	1	37-B	183501	Large Male Spline	1
15-C	180902	1st Stage Pinion 40:1	1	37-C	183502	Small Male Spline	1
16	181900	Needle Bearing J1212/IR812	1	38	133600	SHCS	6
17	131400	SHCS 1/4" - 28 x 3/8"	6	39-A	182803	2nd Stage DU Bearing	1
18	131600	1st Stage Gear Retainer	2	39-B	182804	Bearing Insert	1
19-A	131800	1st Stage Planet Gear 80:1	2	40-A	183800	2nd Stage Ring Gear (FS)	1
19-B	131801	1st Stage Planet Gear 140:1	2	40-B	183601	2nd Stage Ring Gear (MS)	1
19-C	131802	1st Stage Planet Gear 40:1	2	41	133900	SHCS 3/8" - 16 x 1-1/2"	16
20-A	132000	1st Stage Bronze Gear Bearing	2	42-A	133800	Oil Seal (FS)	1
20-B	181211	1st Stage Bronze Journal (OEM)	2	42-B	133801	Oil Seal (MS)	1
21	131900	FH SHCS 5/16" - 18 x 3/4"	5	43	134001	Seal Retainer (FS)	1
22	132100	1st Stage Cage	1	44	134000	Seal Retainer (MS)	1

