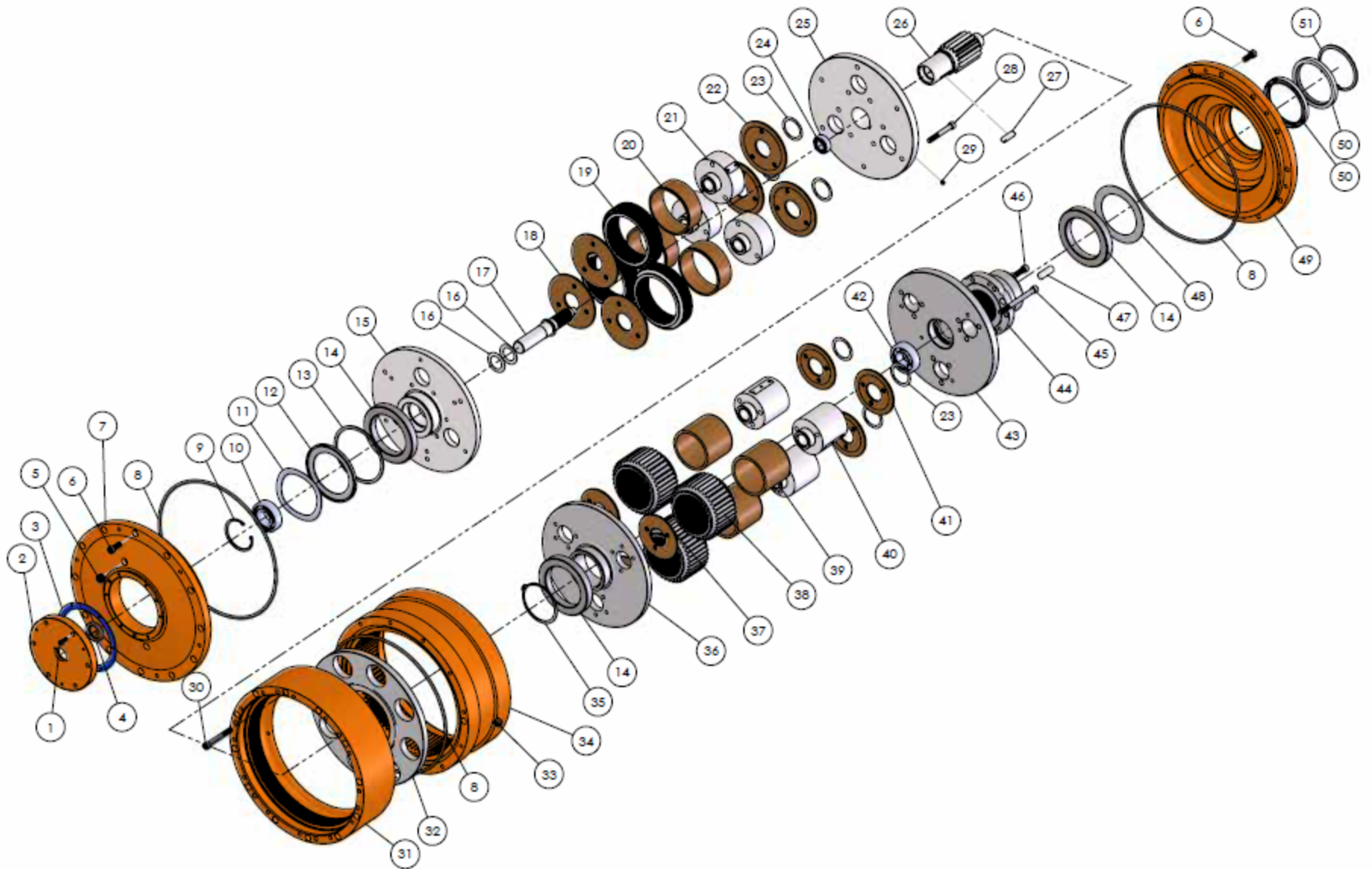


* Rev Tech LC is an independent centrifuge gearbox part supplier for various OEM companies and is not affiliated with these OEM companies.



Item#	Part #	Description	Qty
1	150300	SHCS 5/16" - 18 x 7/8"	6
2	150100	Seal Cap	1
3	150200	Gasket	1
4	150400	Oil Seal	1
5	150500	Oil Plug	2
6	150600	SHCS 1/2" - 13 x 1 1/4"	24
7	150700	Outside Cover	1
8	150800	O'Ring 482 H70	3
9	151200	Spiral Lock Retainer RR - 354	1
10	151100	Bearing 6308	1
11	150901	Wavy Spring Washer	1
12	150902	Wavy Spring Retainer	1
13	150903	Wavy Spring Spacer	1
14	151000	Bearing 5" x 7"	3
15-A	151302	1st Stage Housing P-95 (3 Planet)	1
15-B	151303	1st Stage Housing P-47.5 (3 Planet)	1
16	151101	Disc Spring	2
17-A	152300	1st Stage Pinion P-95	1
17-B	152301	1st Stage Pinion P-47.5	1
18-A	151402	1st Stage Thrust Washer P-95	6
18-B	151403	1st Stage Thrust Washer P-47.5	6
18-C	151400	1st Stage Outside Thrust Washer P-95 (OEM)	2
18-D	151401	1st Stage Outside Thrust Washer P-47.5 (OEM)	2
19-A	151800	1st Stage Planet Gear P-95	2
19-B	151801	1st Stage Planet Gear P-47.5	2
20-A	151700	1st Stage Bronze Bearing P-95	2
20-B	151701	1st Stage Bronze Bearing P-47.5	2
20-C	151710	1st Stage Bronze Bearing P-95 (Flange Style)	2
20-D	151711	1st Stage Bronze Bearing P-47.5 (Flange Style)	2
21-A	151500	1st Stage Axle P-95	2
21-B	151501	1st Stage Axle P-47.5	2
22-A	151900	1st Stage Inside Thrust Washer P-95 (OEM)	2
22-B	151901	1st Stage Inside Thrust Washer P-47.5 (OEM)	2
23	152000	Wavy Spring Washer (OEM)	5

Item#	Part #	Description	Qty
24	152400	Bearing 6304	1
25-A	152106	1st Stage Cover P-95 (3 Planet)	1
25-B	152105	1st Stage Cover P-47.5 (3 Planet)	1
26	152102	2nd Stage Pinion (Insertable)	1
28-A	152202	SHCS 1/2" -13 x 3-3/4"	9
28-B	151600	SHCS 1/2" -13 x 2 3/4" (OEM)	6
28-C	152200	SHCS 1/2" - 13 x 1 1/4" (OEM)	10
30	153100	SHCS 1/2" -13 x 4"	12
31-A	152500	Ring Gear Case Assembly	1
31	152501	1st Stage Ring Gear Case	1
32	152503	Case Center Bearing Support	1
33	152600	Oil Plug	1
34	152502	2nd Stage Ring Gear Case	1
35	152700	Spiral Lock Retainer RR-500	1
36	152801	2nd Stage Housing MOD	1
37-A	152902	2nd Stage Thrust Washer MOD	6
37-B	152900	2nd Stage Outside Thrust Washer (OEM)	3
38	153300	2nd Stage Planet Gear	3
39-A	153200	2nd Stage Bronze Bearing	3
39-B	153210	2nd Stage Bronze Bearing (Flange Style)	3
40	153000	2nd Stage Axle	3
41	152901	2nd Stage Inside Thrust Washer (OEM)	3
42	153600	Bearing 7308	1
43	153500	2nd Stage Cover MOD w/Spline	1
43-A	153501	Spline Plug	1
44	153503	Output spline	1
45-A	152203	SHCS 1/2" -13 x 5-3/4"	9
45-B	153100	SHCS 1/2" - 13 x 4" (OEM)	9
46	153400	3/8-18 x 1-1/2"	6
47	153401	Dowel Pin	2
48	153700	Seal Retainer	1
49	153800	Inside Cover	1
50	153900	Oil Seal	2
51	154100	Spiral Lock Retainer RR-600	1

